



HikDashcam · C 8

User Manual

A Legal Statement

©2022 Hangzhou HikAuto Technology Co., Ltd. All rights reserved.

About This Manual

The Manual includes instructions for using and managing the Product. Pictures, charts, images and all other information herein are for description and explanation only. The information contained in the Manual is subject to change, without notice, due to firmware updates or other reasons.

Trademarks

- **HIKVISION** and other Hikvision's trademarks and logos are the properties of Hikvision in various jurisdictions.
- Other trademarks and logos mentioned are the properties of their respective owners.

Disclaimer

TO THE MAXIMUM EXTENT PERMITTED BY APPLICABLE LAW, THIS MANUAL AND THE PRODUCT DESCRIBED, WITH ITS HARDWARE, SOFTWARE AND FIRMWARE, ARE PROVIDED "AS IS" AND "WITH ALL FAULTS AND ERRORS". HIKAUTO MAKES NO WARRANTIES, EXPRESS OR IMPLIED, INCLUDING WITHOUT LIMITATION, MERCHANTABILITY, SATISFACTORY QUALITY, OR FITNESS FOR A PARTICULAR PURPOSE. THE USE OF THE PRODUCT BY YOU IS AT YOUR OWN RISK. IN NO EVENT WILL HIKAUTO BE LIABLE TO YOU FOR ANY SPECIAL, CONSEQUENTIAL, INCIDENTAL, OR INDIRECT DAMAGES, INCLUDING, AMONG OTHERS, DAMAGES FOR LOSS OF BUSINESS

A Legal Statement

PROFITS, BUSINESS INTERRUPTION, OR LOSS OF DATA, CORRUPTION OF SYSTEMS, OR LOSS OF DOCUMENTATION, WHETHER BASED ON BREACH OF CONTRACT, TORT (INCLUDING NEGLIGENCE), PRODUCT LIABILITY, OR OTHERWISE, IN CONNECTION WITH THE USE OF THE PRODUCT, EVEN IF HIKAUTO HAS BEEN ADVISED OF THE POSSIBILITY OF SUCH DAMAGES OR LOSS.

YOU ACKNOWLEDGE THAT THE NATURE OF INTERNET PROVIDES FOR INHERENT SECURITY RISKS, AND HIKAUTO SHALL NOT TAKE ANY RESPONSIBILITIES FOR ABNORMAL OPERATION, PRIVACY LEAKAGE OR OTHER DAMAGES RESULTING FROM CYBER-ATTACK, HACKER ATTACK, VIRUS INFECTION, OR OTHER INTERNET SECURITY RISKS; HOWEVER, HIKAUTO WILL PROVIDE TIMELY TECHNICAL SUPPORT IF REQUIRED. YOU AGREE TO USE THIS PRODUCT IN COMPLIANCE WITH ALL APPLICABLE LAWS, AND YOU ARE SOLELY RESPONSIBLE FOR ENSURING THAT YOUR USE CONFORMS TO THE APPLICABLE LAW. ESPECIALLY, YOU ARE RESPONSIBLE, FOR USING THIS PRODUCT IN A MANNER THAT DOES NOT INFRINGE ON THE RIGHTS OF THIRD PARTIES, INCLUDING WITHOUT LIMITATION, RIGHTS OF PUBLICITY, INTELLECTUAL PROPERTY RIGHTS, OR DATA PROTECTION AND OTHER PRIVACY RIGHTS. YOU SHALL NOT USE THIS PRODUCT FOR ANY PROHIBITED END-USES, INCLUDING THE DEVELOPMENT OR PRODUCTION OF WEAPONS OF MASS DESTRUCTION, THE DEVELOPMENT OR PRODUCTION OF CHEMICAL OR BIOLOGICAL WEAPONS, ANY ACTIVITIES IN THE CONTEXT RELATED TO ANY NUCLEAR EXPLOSIVE OR UNSAFE NUCLEAR FUEL-CYCLE, OR IN SUPPORT OF HUMAN RIGHTS ABUSES.

IN THE EVENT OF ANY CONFLICTS BETWEEN THIS MANUAL AND THE APPLICABLE LAW, THE LATER PREVAILS.

B Regulatory Information

FCC Information

Please take attention that changes or modification not expressly approved by the party responsible for compliance could void the user's authority to operate the equipment.

FCC compliance: This equipment has been tested and found to comply with the limits for a Class B digital device, pursuant to part 15 of the FCC Rules. These limits are designed to provide reasonable protection against harmful interference when the equipment is operated in a residential environment. This equipment generates, uses and can radiate radio frequency energy and, if not installed and used in accordance with the instructions, may cause harmful interference to radio communications. However, there is no guarantee that interference will not occur in a particular installation. If this equipment does cause harmful interference to radio or television reception, which can be determined by turning the equipment off and on, the user is encouraged to try to correct the interference by one or more of the following measures:

- Reorient or relocate the receiving antenna.
- Increase the separation between the equipment and receiver.
- Connect the equipment into an outlet on a circuit different from that to which the receiver is connected.
- Consult the dealer or an experienced radio/TV technician for help

FCC Conditions

This device complies with part 15 of the FCC Rules. Operation is subject to the following two conditions:

1. This device may not cause harmful interference.
2. This device must accept any interference received, including interference that may cause undesired operation.

The equipment should be installed and operated with a minimum distance 20 cm between the radiator and your body.

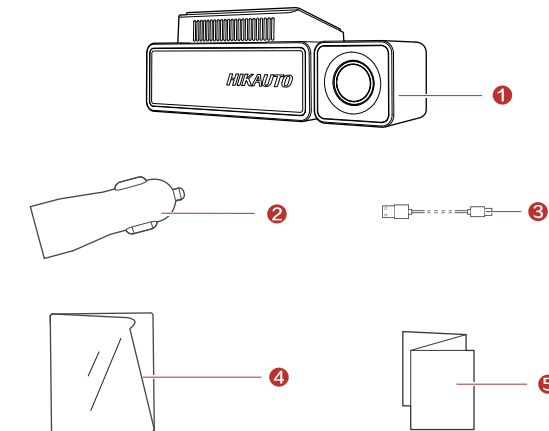
B Regulatory Information

EU Conformity Statement

This product and - if applicable - the supplied accessories too are marked with "CE" and comply therefore with the applicable harmonized European standards listed under the RE Directive 2014/53/EU, the EMC Directive 2014/30/EU, the LVD Directive 2014/35/EU, the RoHS Directive 2011/65/EU.

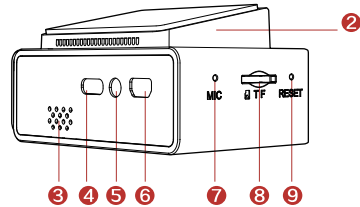
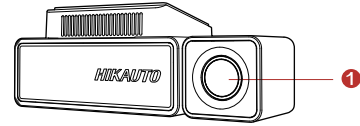
C Accessories

1. Dashcam × 1
2. Car Charger × 1
3. Power Cord × 1
4. Electrostatic Film × 1
5. User Manual × 1

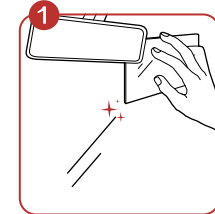


D Product Legend

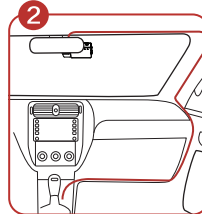
1. Lens
2. Stand
3. Loudspeaker
4. Power Port
5. Rear Camera Port(Optional TVI Camera)
6. Mini-USB Port for Connection to Computer for GPS Transfer and 4G Module Connection
7. Microphone
8. MicroSD(TF) Card Slot
9. Reset Button



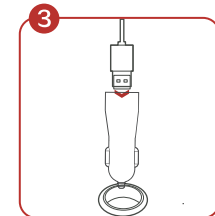
E Installation



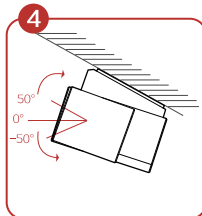
Clean the windshield and place the electrostatic sticker into position. Remove unnecessary air bubbles.



Place the device onto the electrostatic film and route the cable.

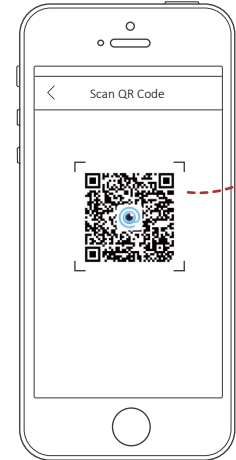


Plug car charger into the cigarette lighter, and plug the power cord into the USB interface.



Adjust the angle for customer viewing. You can adjust 50° up and down.

F Mobile Phone Connection



- 1 Scan the QR code to download and install **HikDashcam** app.
- 2 Connecting the dashcam to the app:
 - a. Open the HikDashcam app.
 - b. Select the **Wi-Fi Connection** from the list.
 - c. Input Wi-Fi password to build connection.

- Parameters can be adjusted on the settings page.
- If the Dashcam Wi-Fi is not detected on the mobile device, please press power button once to switch to Wi-Fi mode.

- Dashcam Wi-Fi default parameters:
 - Wi-Fi SSID: HIKVISION-C8-XXXX (XXXX refers to the last four characters of verification code.)
 - Default Wi-Fi password: 1234567890 (To edit password, please go to the Settings page.)

G Device Operation

Powerup&Shutdown

Access to car power through cigarette lighter. Device starts recording automatically once the car starts. Device powers off when the car turned off.

Note: The cigarette lighter interface of some models may be normal. Please ensure that the device stops working after the car is turned off. Otherwise, the battery of the vehicle may lose power.

Recording

Recordings are divided into standard video and emergency video. The video voice can be turned on/off via System Settings or Hikdashcam APP.

Specifications

| | |
|------------------------------------|------------------------------------------------------------|
| Model | AE-DC8012-C8 |
| Aperture | F1.75 |
| Pixel | 800 W |
| Max. Resolution | 2160P @ 30fps |
| Angle | 143° |
| Storage | MicroSD(TF) card, 32 GB to 128 GB |
| G-Sensor | Built-in, collision triggered recording and recording lock |
| Wi-Fi | Yes |
| Sound Saving While Video Recording | Yes |
| Power Supply | 5 VDC, 2 A |
| Power Consumption | < 3.5 W |
| Operating Temperature and Humidity | -20°C to 70°C, 95%(MAX) |
| Installation Type | General |
| Dimensions (L × W × H) | 104.6 mm × 49.2 mm × 39.4 mm |
| Weight | Approx. 120g |

H Cautions

Safety Instruction

These instructions are intended to ensure that users can use the product correctly to avoid danger or property loss.

Cautions: Injury or equipment damage may occur if any of the cautions are neglected.

- In the use of the dashcam, you must be in strict compliance with the local laws and regulations.
- You are recommended to install the dashcam on the location of rear mirror to ensure the dashcam can record with the best surveillance view. DO NOT install the dashcam on the location that will block the driver's sight.
- Keep the user manual for future reference. See initial connection of dashcam in user manual.
- Purchase the MicroSD(TF) card from authorized retailer. To ensure safe and stable data storage, it is recommended to use MicroSD(TF) card of Class 10 or above.
- Format the new MicroSD(TF) card first before being used.
- To protect MicroSD(TF) card from damage, ensure the dashcam is powered down before installing and uninstalling MicroSD(TF) card.
- If the dashcam is directly connected with the vehicle power system, you are recommended to power off the dashcam when the engine is off. Disconnect cigarette lighter to avoid insufficient voltage and abnormal startup. Reconnect cigarette lighter to ensure dashcam will work normally upon startup.
- Operating temperature is at -20 °C to 70 °C (-4 °F to 158 °F). To protect the dashcam, avoid it being used in high or low temperatures, or high-humidity environment. Avoid using the dashcam in rain or dust.
- The manual is subject to updating at any given time. The functions of the dashcam may vary according to different models.

*The driving assistance function of the device only sends alarms or warnings to the driver and cannot impair the driver's judgement and operation. The device should be used carefully in avoiding accident and traffic violation. Pedestrian or object recognition failure or recognition error may occur due to external factors. DO NOT solely rely on the driving assistance function.

I Troubleshooting

| Trouble | Solution |
|-----------------------------------|----------------------------------------------------------------------------------------------------------------------------------------------------------------------------------------------------------------------------------------------------------------------------------------------------|
| The dashcam drops easily. | <ul style="list-style-type: none">• Clean the windshield before installation.• Ensure the 3M tape is placed properly to the electronic film before the installation. |
| The dashcam does not turn on. | <ul style="list-style-type: none">• Ensure the vehicle is started.• Check whether the car charger is tightly secured.• Press "RESET" button to reboot device.• Restore to defaults: hold the RESET button until prompted for sound. |
| The dashcam keeps powering off. | <ul style="list-style-type: none">• Make sure the power cable is in good condition.• Make sure the power cable is securely connected on both ends. |
| Device is not recording properly. | <ul style="list-style-type: none">• Ensure the dashcam turns on successfully.• Check if MicroSD(TF) card is inserted.• Check the condition of the MicroSD(TF) card, e.g. its format, its lifespan.• There is a problem with MicroSD(TF) card. Replace it. |
| Recording is blurred. | <ul style="list-style-type: none">• Make sure the protective film is peeled off.• Check whether the windshield or the lens of dashcam is clear. |
| Recording is muted. | <ul style="list-style-type: none">• Edit audio settings on the device or turn on sound saving in the HikDashcam app.• Turn on sound through the dashcam's audio control function. |
| Dashcam reboots automatically. | <ul style="list-style-type: none">• Check whether the car charger is tightly secured.• Make sure the device is powered by car charger with 5V, 2A interface. |

I Troubleshooting

| Trouble | Solution |
|---------------------------------------------------------------------------------------------------------------|--------------------------------------------------------------------------------------------------------------------------------------------------------------------------------------------------------------------------------------------------------------------------------------------------------------------------------------------------------------------------------------------------------------------------------------------------|
| Dashcam app cannot connect to dashcam. | <ul style="list-style-type: none">• Make sure HikDashcam app is installed.• Please restart the dashcam device. |
| The mobile app cannot display recordings. | <ul style="list-style-type: none">• Check the source player or system of the phone. Please connect MicroSD(TF) card to your computer and view the recordings. |
| The microSD (TF) card is not detected when connecting the dashcam to a computer with the supplied power cord. | <ul style="list-style-type: none">• The dashcam does not support data transmission, and the supplied power cord is only for charging.• If you need to transfer data, connect the microSD (TF) card to your computer. |
| Wi-Fi connection takes too long to connect. | <ul style="list-style-type: none">• It may be caused by the interference of the surrounding Wi-Fi signals. Ensure the dashcam being used in an environment with no interference.• Close unnecessary programs in your phone to memory for HikDashcam app then reconnect Wi-Fi. |
| Dashcam Wi-Fi password is forgotten. | <p>The default password is 1234567890. If you have revised the password, reset the password by doing the following:</p> <ol style="list-style-type: none">1. Hold the RESET button on the dashcam until the startup music is heard, the dashcam will be restored to the defaults.2. Go to the HikDashcam app's Wi-Fi connection interface. Select the Wi-Fi SSID, and log in with the default password 1234567890. |